



AgiliProve

ALM Integration Installation Guide

Document Id: TD.AP.ALM.GUI.04
Date Issued: January 2025

Legal Notices

Warranty

The only warranties for Melillo products and services are set forth in the express warranty statements accompanying such products and services. Nothing herein should be construed as constituting an additional warranty. Melillo shall not be liable for technical or editorial errors or omissions contained herein. The information contained herein is subject to change without notice.

Restricted rights legend

Confidential computer software. Valid license from Melillo required for possession, use or copying. Consistent with FAR 12.211 and 12.212, Commercial Computer Software, Computer Software Documentation, and Technical Data for Commercial Items are licensed to the U.S. Government under vendor's standard commercial license.

Third-party Web sites

Melillo provides links to external third party Web sites to help you find supplemental information. Site content and availability can change without notice. Melillo makes no representations or warranties whatsoever as to site content or availability.

© 2025 Melillo. All rights reserved.

Trademark Notices

Microsoft®, Windows®, is a U.S registered trademark of Microsoft Corporation.

MongoDB and Mongo are registered trademarks of MongoDB, Inc.

Installation Overview

AgiliProve is comprised of multiple components installed in the following order:

1. Database Server
2. AgiliProve Core Service
3. Snap-ins (AgiliProve.DocMgt, AgiliProve.ALM_12_53, AgiliProve.ALM_12_21)
4. ALM Integration

Once the above components are installed, you should use the Administrator and User Guides to get more information about the use of the system.

Abbreviations and Definition of Terms

Term	Definition
Melillo	Melillo Consulting The technology service provider that created AgiliProve.
AgiliProve	Software and configuration that provides appropriate controls to Snap-in Systems to enable those Systems to perform validated operations in a controlled environment.
ALM	MicroFocus Application Lifecycle Management
ALM Integration	This is the concept of the AgiliProve features that are added to the ALM Base UI

Software Requirements

Minimum Software Requirements

1. Windows 8 and higher or Windows Server 2012 R2 or higher (64-bit OS)
2. Microsoft .Net 4.7.1
3. Compatible version of AgiliProve already installed
4. Compatible version of AgiliProve ALM Snap-in is installed and configured

Minimum Hardware Requirements

The integration plug in does not add any additional hardware requirements. You should refer to the ALM documentation to determine the client hardware requirements.

ALM Integration Installation

ALM Integration allows using the AgiliProve ALM workflows from the default ALM UI in Internet Explorer. You should first make sure the AgiliProve ALM Snap-in is installed on an AgiliProve server and is configured correctly.

Installation Parameters

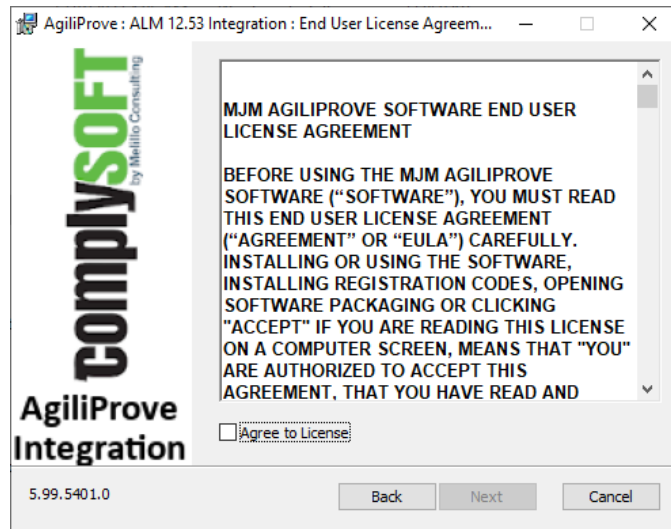
Parameter	Description
Program Directory	<p>The location that the ALM Snap-in binaries will be installed into</p> <p>Default: C:\Program Files(x86)\Melillo\AgiliProve\</p> <p>Note: This is not selectable</p>

Installation Steps

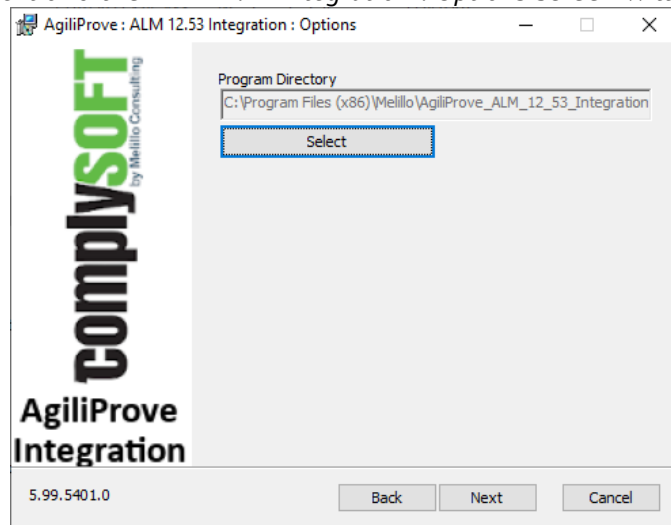
1. Run AgiliProve.ALM_<ALM Version>.Integration.msi
 - a. AgiliProve.ALM_12_21.Integration.msi
 - b. AgiliProve.ALM_12_53.Integration.msi
 - i. Note: This file supports ALM 12.53, 12.55, 12.60, 15.0, 15.5, 16.x, 17.x, 24.x, 25.x
2. The welcome screen will be shown:



- Click *Next* and the EULA will be shown:

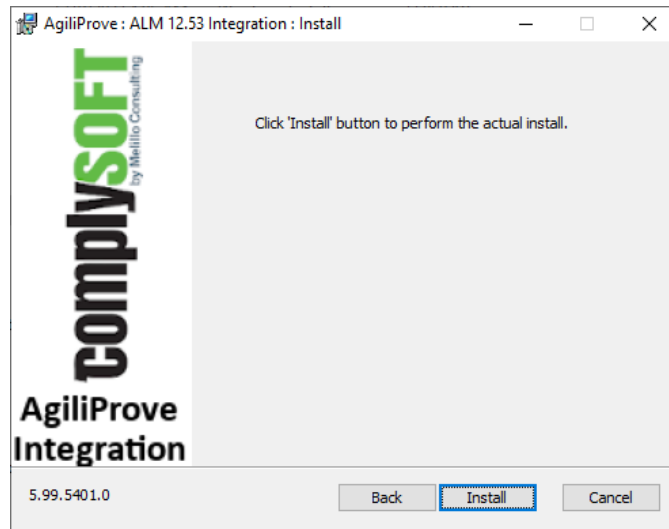


- Agree to the EULA by checking the *Agree to License* checkbox.
- Click *Next* and the *ALM xx.xx Integration : Options* screen will be shown:



To change the *Program Directory*, click the corresponding *Select* button and choose the folder to install the binaries into.

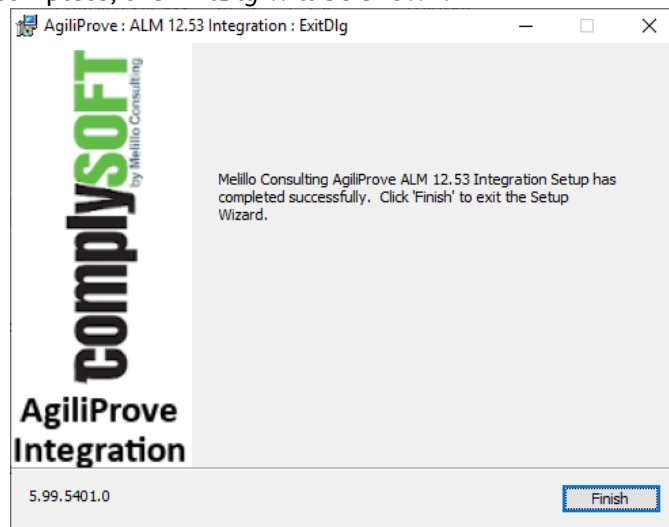
6. Click *Next* and the *Install* screen will be shown:



7. Click the *Install* button to perform the installation and, when complete, AgiliProve ALM Integration will be installed.

Note: this step could take a few minutes.

8. When complete, the *ExitDlg* will be shown:



9. Click *Finish* to complete the installation and close the installer.

Uninstall Instructions

The ALM Snap-in can be removed via the Programs and Features component of the Windows Control Panel. It will be listed as:

- Melillo AgiliProve ALM xx.xx Integration